



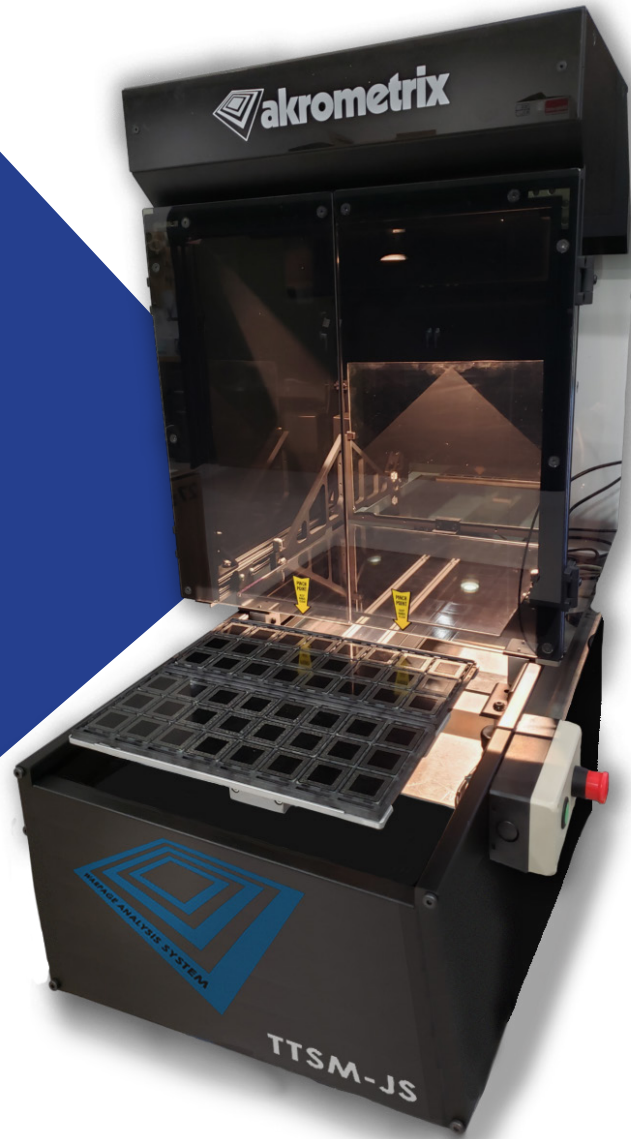
akrometrix

Thermal Warpage & Strain Metrology

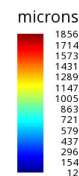
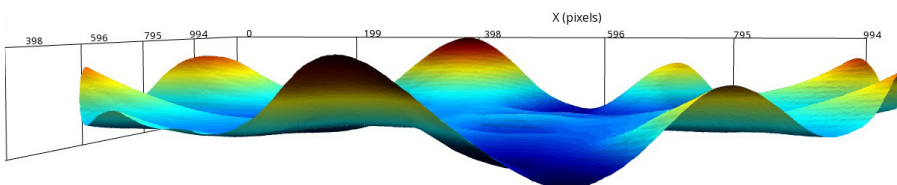
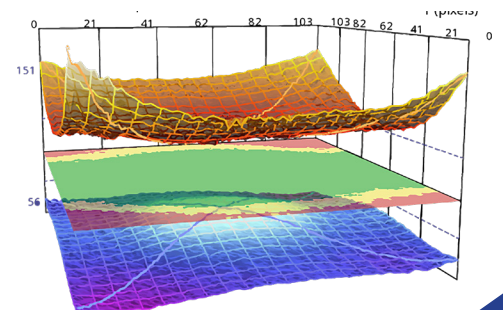
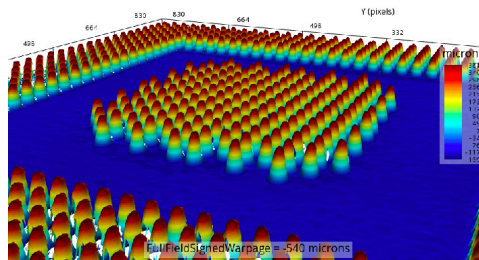
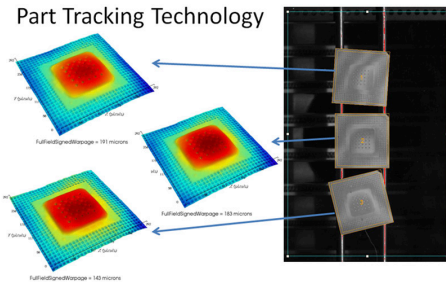
TTSM-JS Warpage System

Table Top Shadow Moiré w/ JEDEC Autoloader and Scanner

- “Production Floor Component Warpage Measurement System”
- Quick, Cost-Effective Component Warpage Solution
- Vision Technology: Akrometrix Shadow Moiré
- Runs on the Akrometrix Studio Software Suite
- Single Push Button Activation (Load, Measure, Unload)
- Capable of Scanning QR codes, Barcodes, and Data Matrices



Part Tracking Technology



akrometrix.com
sales@akrometrix.com
1-404-486-0880

TTSM-JS Technical Specifications

	TTSM w/ JEDEC Autoloader and Scanner
Measurement Technology	Shadow Moiré
Maximum Field of View (mm)	310x300
Minimum Field of view (mm)	310x300
Maximum Sample Size (mm)	2 Standard JEDEC Trays
Minimum Sample Size (mm)	5x5
Maximum Measured Surface Coplanarity	1750 microns
Resolution, Z-axis (vertical displacement)	1.7 microns
Accuracy, Z-axis (vertical displacement)	1.7 microns / 2%
Maximum Measurement Points per Acquisition	2,009,736
Maximum Measurement Density (points per mm ²)	19
Minimum Measurement Density (points per mm ²)	19
Automated Data Collection?	yes
Batch Data Analysis?	yes
Software	Akrometrix Studio 8.6.3 or Later
Data Export Formats	.dat, .txt, .png
Sample Load/ Unload Time	4 seconds, Automatic
Sample Scanning Time	2-10 seconds, Automatic
Data Acquisition (Measurement) Time, approx.	2 seconds
Data Analysis Time per Acquisition, approx.	2 seconds
Approximate Depth, Width, Height (mm)	813 x 621 x 991
Approximate Weight (kg)	55 kg
Electrical requirements	110 VAC, 10A or 230VAC, 10A, 50Hz
Other Utilities	N/A

