



akrometrix

Thermal Warpage & Strain Metrology

DFP3

Digital Fringe Projection Module

For Thermal Topography
on Discontinuous Surfaces

- Add-on module compatible with AXP3 & PS600T
- Field of View Measurement up to 240mm x 192mm in 2 second
- With resolutions down to 1.5 microns
- Setup automation with:
 - Software lens control
 - Module Autoloader

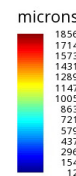
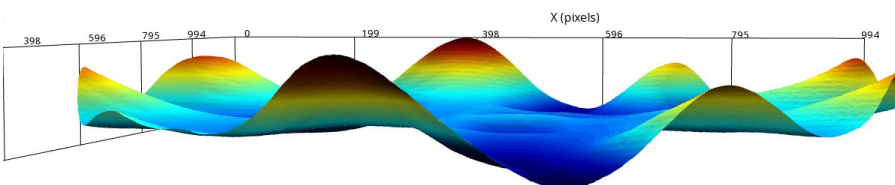
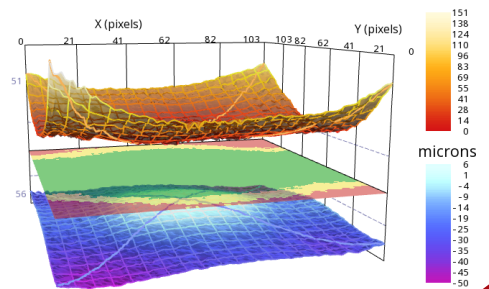
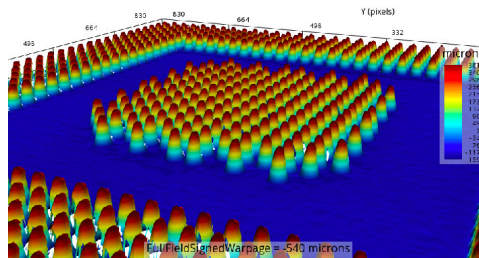
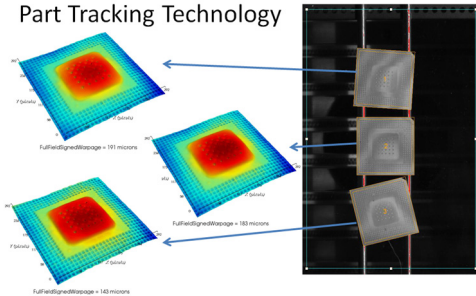


ON VIRTUALLY ANY SUBSTRATE

- PCBs
- Panels
- Wafers
- Stacked Die
- Individual Die
- Populated Boards
- Wafers on Film Frame
- Components
- Fan out Wafers
- CoWoS



Part Tracking Technology



akrometrix.com
sales@akrometrix.com
1-404-486-0880

DFP3 Technical Specifications

	AXP 3	PS600T
Vision Measurement Technology	Digital Fringe Projection	
Maximum Field of View (FOV) (mm)	240x192	
Minimum Field of View (FOV) (mm)	47.5x38	
Maximum Sample Size (mm) - Overall	400x400	820x830
Minimum Sample Size (mm)	0.5x0.5	
Maximum Measured Surface Coplanarity	50,000 microns	
Resolution, Z-axis (vertical displacement)	1.5 microns	
Accuracy, Z-axis (vertical displacement)	2.5 microns / 3%	
Resolution, Z-axis at max FOV (vertical displacement)	3 microns	
Maximum Measurement Points per Acquisition	16,056,320	
Maximum Measurement Density (points per mm ²)	8895	
Minimum Measurement Density (points per mm ²)	348	
Thermal Processing Technology	Radiant IR	
Maximum Temperature	300°C	
Maximum Heating Rate °C/sec (from 50°C to 250°C)*	3.5	
Maximum Cooling Rate °C/sec (from 250°C to 125°C)*	2.25	1.25
Maximum Thermal Profiles	Unlimited	
Maximum Thermal Cycles Time	Unlimited	
Maximum Acquisitions per Cycle	Unlimited	
Independently Controlled Topside Heating?	yes	
Multi-Zone Bottom Heater?	yes	
Automated Data Collection?	yes	
Batch Data Analysis?	yes	
Electronically Controlled Lensing?	yes	
Software	Akrometrix Studio 10.1 or later	
Data Export Formats	.dat, .txt, .png	
Sample Set-up time, typical	4 minutes	
Sample preparation method, typical	optional	
Data Acquisition (Measurement) Time, approximate	2 seconds	
Data Analysis Time per Acquisition, approximate	16 seconds	
Approximate Depth, Width, Height (mm)**	1564x1335x1780	1754x1483x2193
Approximate Weight (kg)	161	170
Electrical Requirements	powered by base system	
Other Utilities	exhaust 14286 lpm	exhaust 4000 lpm

*Thermal Ramp rates based on 27x27x1.4mm substrates sample

** System dimensions with DFP3 module installed



www.akrometrix.com
sales@akrometrix.com
 1-404-486-0880